



BURLEIGH POINT OUTRIGGER CANOE CLUB
OC1/OC2/V1/Ski REGATTA
SATURDAY 4 OCTOBER 2014
Muriel Henschman Drive, off Seaworld Drive, The Spit, Gold Coast



BURLEIGH POINT OUTRIGGER CANOE CLUB

Invites you to the

SQ ZONE OC1/OC2/V1/Ski SERIES RACE 4

SATURDAY, 4 OCTOBER 2014

Muriel Henschman Drive, off Seaworld Drive, The Spit, Gold Coast

Race Director: Peter Anderson

M: 0437 116 264



BURLEIGH POINT OUTRIGGER CANOE CLUB

OC1/OC2/V1/Ski REGATTA

SATURDAY 4 OCTOBER 2014

Muriel Henchman Drive, off Seaworld Drive, The Spit, Gold Coast

Dear Paddlers,

On behalf of our Management Committee and members of Burleigh Point Outrigger Canoe Club, we take great pleasure in inviting your club members to participate in SQ Zone OC1/OC2/V1/Ski Series, Race 4, on the 4 October 2014.

This event will be run from the The Spit, Gold Coast.

Our program has been designed in accordance with AOCRA requirements. In addition, as per SQ Zone requirements, the short course event is 8km and the long course event is 16km. We will also be hosting junior events.

All nominations for this regatta are to be completed on-line at www.aocra.com.au
Please ensure your club's early entry of nominations so that we can plan for your requirements.

We look forward to having you and your team members join us for some challenging racing.

Warm regards,

Debbie Abbott
President
Burleigh Point Outrigger Canoe Club
0405 169 876
www.burleighoutrigger.com.au
<http://www.facebook.com/burleighpointoutriggers>



BURLEIGH POINT OUTRIGGER CANOE CLUB

OC1/OC2/V1/Ski REGATTA

SATURDAY 4 OCTOBER 2014

Muriel Henschman Drive, off Seaworld Drive, The Spit, Gold Coast

RACE PROGRAM

Time	Event	Distance
7:00am	Registration open	
7:45am	Short course & 19U OC1 & 16U OC2 briefing	
8:00am	Short Course start – All divisions OC1/OC2/V1/Ski & 19U OC1 & 16U OC2	8 km
9:15am	Juniors Briefing	
9:30am	Start: 14U OC1/V1 & 12U OC2	4 km
10:05am	Start: 12U OC1/ V1	2km
10:45am	Start: 16U OC1/ V1 & 14U OC2	6km
11:45am	Long Course briefing	
12:00pm	Long course Start – all divisions OC1/OC2/V1/Ski/19U OC1/19U OC2	16km
12:15pm	Junior presentations	

- All senior divisions of OC1/OC2/Ski/V1 will start together in the Short course and Long course.
- Should the alternative courses have to be utilised for the short and/or long course races, the start may be staggered
- The organisers reserve the right to amend the event program and courses due to adverse weather conditions or other unforeseen circumstances.
- All competitors are to comply with AOCRA Regatta Rules and all other regulations as outlined at www.aocra.com.au.
- **CANCELLATION/ REFUNDS:** Burleigh Point Outrigger Canoe Club Inc is entitled to deduct administrative, legal, operational and other costs from any refund amount (if any) paddlers would be entitled to receive by way of refund (if payable at law).

TIDES

Saturday 4 October 2014	
Time (seaway)	Height
4:25 am	1.74m
10:10 am	.48m



BURLEIGH POINT OUTRIGGER CANOE CLUB

OC1/OC2/V1/Ski REGATTA

SATURDAY 4 OCTOBER 2014

Muriel Henschman Drive, off Seaworld Drive, The Spit, Gold Coast

FEES & NOMINATION INFORMATION

Club Nominations close: 27 September 2014

Senior OC1/OC2/V1/Ski paddler	\$20
Junior OC1/OC2/V1 paddler	\$10

Registration in advance for all paddlers (including non-AOCRA members) will be on-line at www.aocra.com.au. No registrations will be accepted at the venue. We ask that paddlers nominate by **5pm Sunday 26 September** to help with support boat requirements/planning.

Sign in will be at the venue

SAFETY

Leg ropes (one per canoe) and PFD's (one per paddler) are mandatory. If a paddler requires assistance they are asked to raise their paddle above their head to alert the support boat.

MEDALS

Medals will be awarded for placing in all junior races.

CANOE UNLOADING AND TRAILER PARKING

There is adequate trailer/car parking in the parking lot at Muriel Henschman Drive off Seaworld Drive.

REFRESHMENTS

Hot (BBQ) and Cold, Food and Beverages will be available during the day

ACCOMMODATION

Multiple options to be found on web sites such as, Trip Advisor.com, Booking.com etc. Look for options in suburbs such as Main Beach, Southport, Surfers Paradise and Broadbeach which are all on the main access route to The Spit. Note that there is a new Light Rail system in operation and traffic conditions have changed.

EVENT UPDATES

Event information will be updated on the club website:

<http://www.burleighoutrigger.com.au/club-news/2014-club-events/>

In the case of inclement weather please refer to the club website or club [facebook](#) .



BURLEIGH POINT OUTRIGGER CANOE CLUB

OC1/OC2/V1/Ski REGATTA

SATURDAY 4 OCTOBER 2014

Muriel Henchman Drive, off Seaworld Drive, The Spit, Gold Coast

RACE SERIES POINTS

Senior teams will be awarded points in the OC1/OC2/V1/Ski Series.

Place	Points	Place	Points
1st	9	4th	3
2nd	7	5th	2
3rd	5	6th	1
Note that competitors must race in 4 races within one division, to be eligible for series point score awards.			

RULES AND REGULATIONS

REGATTA RULES

Australian Outrigger Canoe Racing Association rules, as amended, will apply to all events in the regatta.

COMPETITOR ELIGIBILITY

- Competitors must be AOCRA members, unless otherwise approved by AOCRA
- Each Club will register all AOCRA members with the Zone Registrar (including proof of age where required) at least 14 days prior to that said members' first Regatta.

AGE/GENDER DIVISIONS

General Requirements

- The following Adult Age/Gender Divisions and Junior Age/Gender Divisions apply to all competitors, except for Corporate/Club Day competitors
- Corporate/Club Day Regatta events may have a mix of gender and age, with Zone approval.
- AOCRA or the Zone reserves the right to request proof of age of a competitor at any time
- A competitor's age for a Racing Year is determined by their age as at 31st December of the Racing Year
- Junior competitors may not paddle in more than 2 junior age divisions at the same regatta
- Junior competitors may only paddle up one division within a regatta (i.e. 12U competitor may paddle up a division to 14U, but not 16U), except where Rule B.3.2. applies
- Junior competitors 12U, 14U and 16U may not paddle in senior Changeover events



BURLEIGH POINT OUTRIGGER CANOE CLUB

OC1/OC2/V1/Ski REGATTA

SATURDAY 4 OCTOBER 2014

Muriel Henchman Drive, off Seaworld Drive, The Spit, Gold Coast

Adult Age Divisions	Women's Age	Men's Age
21 and Under	20 to 21 Inclusive	
Open	Adult age i.e. 20 yrs and above	
Masters	40 yrs and above	40 yrs and above
Senior Masters	50 yrs and above	50 yrs and above
Golden Masters	60 yrs and above	60 yrs and above
Platinum	70 yrs and above	70 yrs and above
Juniors eligibility to compete in Adult events	a) 19U division may compete in adult divisions (21U and Open) without the need for parental or coach consent. b) Must be aged 14 yrs and above and have: i) written parental / guardian permission; ii) written approval of qualified outrigger specific coach	

Junior Age/Gender Divisions

B.3.4.1. Minimum and Maximum Junior Ages

- Junior Competitors must turn at least 8 years of age in the calendar year. The following conditions will apply to paddlers under 10 years of age; A risk assessment must be conducted by a level 1 sports specific outrigger coach prior to each training/racing season; Correctly fitted life jackets must be worn by all paddlers under 10 years as assessed by a qualified coach.
- Junior Competitors will not have reached the age of 20 years during the Racing Year

Racing Division	Requirement
19 years and under	must not turn 20 in the Calendar Year of competition
16 years and under	must not turn 17 in the Calendar Year of competition
14 years and under	must not turn 15 in the Calendar Year of competition
12 years and under Minnows:	must not turn 13 in the Calendar Year of competition 8 years in racing year but no older than 10 years in racing year.

Gender Mix at Junior Regattas

- At National Titles, all Junior division teams will consist of a maximum of four male competitors.
- Gender Mix at Zone Titles/Club/Combined Regattas will be subject to approval by the Zone or AOCRA.



BURLEIGH POINT OUTRIGGER CANOE CLUB

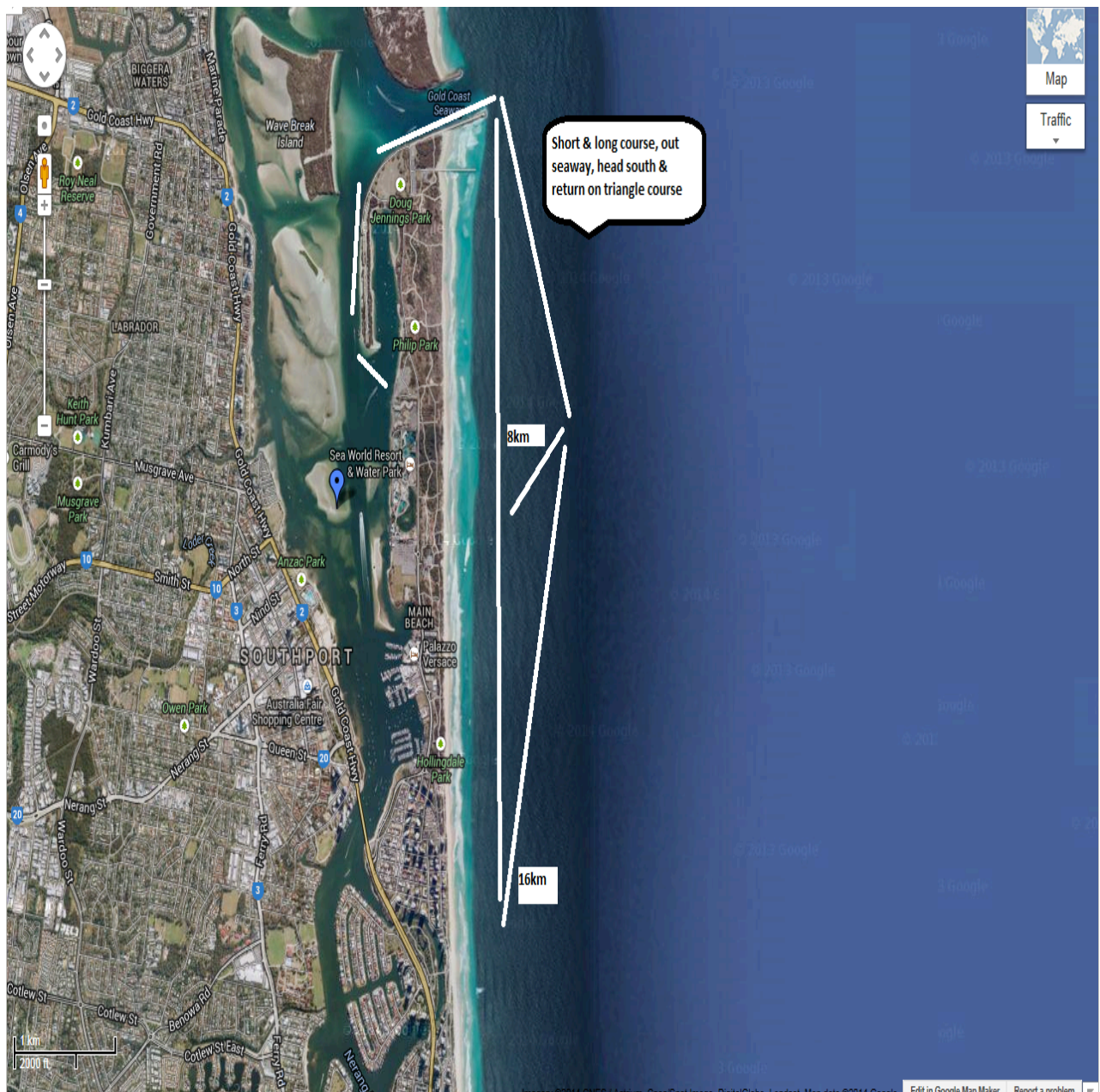
OC1/OC2/V1/Ski REGATTA

SATURDAY 4 OCTOBER 2014

Muriel Henschman Drive, off Seaworld Drive, The Spit, Gold Coast

COURSE MAP – 8KM, 16 KM

- The course may be changed subject to conditions on the day.
- The 8km short course will simply be a shorter version of the 16km, i.e. after turning south outside the seawall, will not travel as far south before turning to come back.
- **The alternative route for both races will be as for junior courses as per Maritime Safety Queensland permit approval requirements**





BURLEIGH POINT OUTRIGGER CANOE CLUB

OC1/OC2/V1/Ski REGATTA

SATURDAY 4 OCTOBER 2014

Muriel Henchman Drive, off Seaworld Drive, The Spit, Gold Coast

COURSE MAP – 2Km, 4Km, 6Km

Also alternative course for short & long course races

Detailed course directions will be provided at the briefings.

